



rda.gov.au

RDA Eyre Peninsula News - April 2024

State Prosperity Project

The State Prosperity Project is a co-ordinated initiative by the State Government to unlock the full potential of renewable energy, critical minerals and green manufacturing capability - all centred in and around the Eyre Peninsula and Upper Spencer Gulf.

Projects include:

- World-leading Hydrogen Power Station - Whyalla
- Northern Water desalination plant and pipeline network - Cape Hardy
- Green Iron - Whyalla Steelworks
- Hydrogen Jobs Plan featuring the world's biggest hydrogen production facility, power plant and storage at Whyalla
- Port Bonython Hydrogen Export Hub.

[Read more](#)

Qantas Australian Tourism Awards 2023



The Qantas Australian Tourism Awards were held in Darwin in March, with the Eyre Peninsula represented in two categories!

Congratulations to the Port Lincoln Visitor Information Centre for their outstanding win of the bronze award in the Visitor Information Services category.

Regional Development Australia Eyre Peninsula was a finalist in the Tourism Marketing Campaigns category for the Eyre - The Wild Side branding.

The 2024 National Awards will be held in Adelaide. Nominations for the 2024 South Australian Tourism Awards open on Wednesday 1 May, register your interest [HERE](#).

Pictured: CEO Ryan Viney and Chair, Bryan Trigg represented RDAEP at the Awards. Attending on behalf of the Port Lincoln Visitor Information Centre were Dylan Swincer and Penny Carter.

Eyre Peninsula Early Education & Care



RDAEP is working with Community Early Learning Australia (CELA) to identify how Eyre Peninsula communities can access quality early learning education services.

Without long day care, it's hard to attract the workforce that keeps our town running.

In late February, RDAEP's Ryan Viney (CEO) and Trevor Smith (Economic Development Manager) along with CELA's CEO, Michele Carnegie took proposed solutions to Canberra and met with Minister for Early Childhood Education, the Hon Dr Anne Aly, and the Hon Kirsty McBain, Minister for Regional Development, Territories and Local Government to discuss how small and community managed services can unlock the potential of regional communities with the right support. This includes providing critical capital funding to build new services in areas of greatest need.

Community-led services provide a significant return on investment for governments, communities and families. This is the foundation for ensuring regional communities like Eyre Peninsula can grow and thrive.

Pictured: Trevor Smith, RDAEP; Michele Carnegie, CEO Community Early Learning Australia; the Hon Dr Anne Aly MP, Minister for Early Childhood Education; Ryan Viney, CEO RDAEP.

Regional Leadership Development Program



2024 RDAEP Regional Leadership Development Program EOI Now Open!

The State Government via the South Australian Department of Primary Industries and Regions (PIRSA) has allocated an additional \$2 million in funding to extend the phenomenally successful program fostering future leaders in regional South Australia.

The program is delivered through Regional Development Australia Eyre Peninsula and is facilitated to fill the gaps in leadership training. This program meets the specific needs of our community, while also reducing participant travel and increasing accessibility for previously under-represented leadership cohorts, such as women and local First Nations participants.

In 2023, 25 participants from Eyre Peninsula completed the 10-month program.

The program has resulted in many participants either taking up roles on community boards or committees or increasing their commitments on these bodies.

In 2024, RDAEP are pleased to continue leading the delivery of the program, making further use of their expansive regional networks.

The Eyre Peninsula Program is currently being finalised to meet the specific needs of our community.

We are now calling for expressions of interest from the community who would like to undertake this program in 2024.

Please note: Submission of an Expression of Interest in the program does not guarantee a place within the program.

Once an EOI has been submitted, a member of the RDAEP team will make contact to discuss your EOI and determine the next steps.

Express your interest [HERE](#)

EOIs close on Sunday 21st April at midnight.

For further information, please contact richard.horgan@rdaep.org.au

BUSINESS EVENTS AND OPPORTUNITIES

Small Business Fundamentals Program

INDUSTRY CAPABILITY NETWORK (ICN)

BASICS

- Who is ICN? How can you connect to projects?
- How can you maximise your profile?
- How can you express interest in projects?
- EP & Upper Spencer Gulf project overview
- Hands on workshop, laptop required.



PORT LINCOLN, 15 APRIL
11.30AM-1.00PM



TUMBY BAY, 15 APRIL
6.30PM-8.00PM



WHYALLA, 16 APRIL
12.00PM-1.30PM

More Information:

tamsin.scholze@rdaep.org.au



Contractors, are you interested in working on large scale infrastructure projects currently planned for Eyre Peninsula?

- SA Water desalination plant - Port Lincoln
- Northern Water project - Cape Hardy
- Hydrogen Jobs Plan - Whyalla

RDAEP and ICN are assisting businesses to develop or update their ICN profile.

Industry Capability Network (ICN) Basics

Port Lincoln Hotel

Monday 15th April | 11:30am-1pm

[Register Here](#)

Tumby Bay Community Centre

Monday 15th April | 6pm - 7:30pm

[Register Here](#)

Whyalla Norrie, Westland Hotel Motel, 100 McDouall Stuart Ave

Tuesday 16th April | 12noon - 1:30pm

[Register Here](#)



We Need You

RDAEP is looking for business mentors to assist small and family business owners as part of the Small Business Fundamentals Program. No, you don't have to be an expert, just bring your small business experience to help our program participants in setting and achieving their business goals and objectives.

[Find out more](#)

Small Business Week 2024

SMALL BUSINESS WEEK 2024

Explore the program

business.sa.gov.au/week

29 APRIL - 03 MAY

Government of South Australia

Registrations are now open for businesses to participate in in-person and online events across SA, including Ceduna and Port Lincoln - all designed to support your growth and development.

The official program includes a free, full-day expo at the Adelaide Entertainment Centre on Thursday 2 May, as well as workshops, webinars, in-person information sessions, tours, and networking opportunities.

Find out more at: <https://www.rdaep.org.au/sa-small-business-week/>

WORKFORCE

Live & Work - Eyre Peninsula: Make the Move



The Eyre Peninsula sure is a great place to live and work! If you're trying to get someone to move here, maybe show them this? This video is one of two produced by RDAEP to showcase the opportunities and liveability of the region. Both can be viewed on our website here: <https://www.rdaep.org.au/live-work/>

International Students Seeking Work



Access new talent!

Join us for a special event connecting local employers to highly qualified international students and graduates.

Meet with students studying a range of disciplines and discuss their potential to gain employment with you at this free networking event.

international students who are interested in living and working in regional South Australia to the Upper Spencer Gulf in April.

You are invited to join StudyAdelaide in Port Pirie (16 April), Whyalla (17 April) or Port Augusta (18 April) to meet talented international students and graduates from a range of disciplines in demand locally.

[Read more](#)

Explore Career Expo - Port Lincoln

EXPLORE CAREER EXPO

Discover pathways and opportunities...

DON'T MISS OUT!
SECURE YOUR
PLACE NOW!

- Explore careers, further education and training opportunities
- Enjoy interactive displays and demonstrations
- Gain free career advice
- Apply for jobs and training at the event
- Informative break-out sessions
- Discover jobs of the future



Wednesday
5th June 2024
3.30pm - 6.30pm

Port Lincoln Hotel Function Room



Government of South Australia
Department for Education



Workforce Australia
Local Jobs
North West Country

Attention business owners and operators!

Are you keen to showcase your business' job opportunities at the upcoming Explore Career Expo hitting Port Lincoln this June?

Spots for exhibitors will fill up fast.

Register at <https://unihubsg.org/2024/03/1..>

The expo is a chance for your business and brand to shine, explore new avenues for growth, connect with the community and inspire our future workforce. It will showcase regional careers, higher education, training, and employment opportunities.

Mindarma Webinars

Proven to protect, Mindarma's evidence-based e-learning program provides a simple, practical way to support your whole team.

Register now to receive Mindarma free.

Upcoming webinars:

How to protect against burnout and fatigue -
Wednesday 10 April

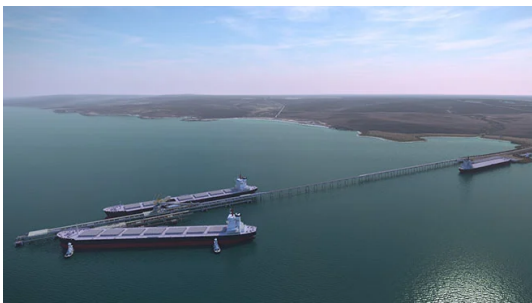
Rest Fest - various dates in May

Look after what matters most.

[Find out more](#)



HAVE YOUR SAY

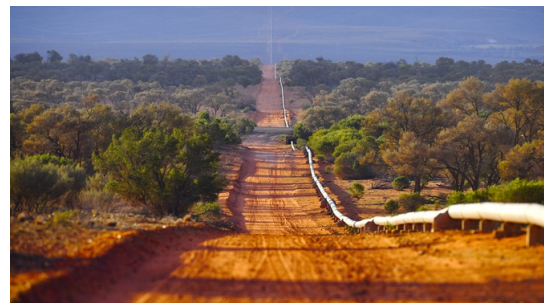


Consultation open to Monday 15 April

Hydrogen and Renewable Energy Act - Draft Regulations

The SA Government developed the *Hydrogen and Renewable Energy Act 2023* (the HRE Act) to streamline processes for companies to invest here in large-scale projects. The next step is to establish regulations to support the Act's operation.

[Have Your Say](#)



Community Conversations - Whyalla, Tumby Bay and Port Neill

Northern Water

Northern Water is investigating the option of a seawater desalination plant in the Spencer Gulf at Cape Hardy. The plant would be connected to the Upper Spencer Gulf and northern South Australia via approximately 600km of pipeline.

[Get involved](#)

Select Committee on Water Supply Needs of Eyre Peninsula
Submissions or registrations of interest invited by Friday 12 April 2024.

<https://www.parliament.sa.gov...>



**LEGISLATIVE COUNCIL
OF SOUTH AUSTRALIA**
**SELECT COMMITTEE ON WATER
SUPPLY NEEDS OF EYRE PENINSULA**

A Select Committee of the Legislative Council has been established to inquire into and report on the water supply needs of the Eyre Peninsula, including a focus on the potential location of desalination plant/s and with particular reference to:

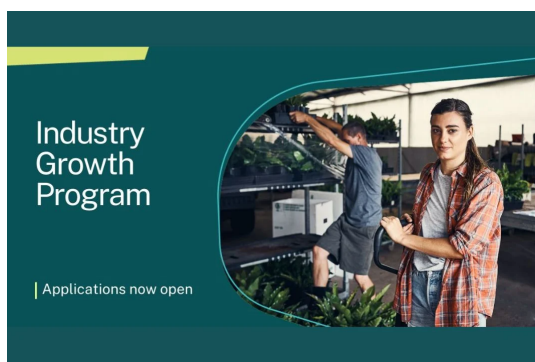
- (a) Assessing the current and future water supply and distribution requirements of the Eyre Peninsula, including for potential industrial growth needs;
- (b) Evaluating the feasibility and impact of locating desalination plant/s on the Eyre Peninsula, including the selection process for locating a desalination plant in Port Lincoln, with particular emphasis on community engagement and consultation processes with residents and key stakeholders;
- (c) Examining the environmental, economic, cultural and social implications of desalination plant operations in the proposed locations;
- (d) Exploring the decision-making responsibility for water supply and distribution on the Eyre Peninsula, including community engagement and consultation processes to ensure the active involvement of residents and key stakeholders in decision-making regarding water infrastructure;
- (e) Any other relevant matters.

Any person or organisation wishing to make a written submission to the Committee, or register an interest in presenting oral evidence to the Committee, is invited to do so by Friday, 12 April 2024. Written submissions and expressions of interest should be addressed to the Secretary to the Committee, C/- Parliament House, GPO Box 572, Adelaide 5001, or e-mail at scepwater@parliament.sa.gov.au. For any queries or to discuss the submission due date, please contact the Secretary by telephone on (08) 8237 9498 or as above.

MORE INFORMATION

Ms Leslie Guy
Secretary to the Committee

GRANTS AND FUNDING OPPORTUNITIES



You can apply at any time

Industry Growth Program

This program supports commercialising and growing businesses, particularly those within the National Reconstruction Fund's priority areas like value-add in resources, medical science, and renewables. Participating businesses get connected to an Industry Growth Program Adviser who provides tailored advice to support your



Close Monday 29 April

Community Grassroots Grants

\$110,000 is available for the Eyre Peninsula community to put towards local landscape management projects or events focusing on water, sustainable agriculture, pest plants and animals, biodiversity and community.

commercialisation and growth projects. Grants ranging from \$50,000 to \$250,000 are available to support early-stage commercialisation projects. For more mature projects, grants from \$100,000 to \$5 million are offered.

[Apply Now](#)

“These grants are about inspiring the community to become actively involved in the sustainable management of our local natural resources.” ~ Board Chair, Peter Treloar.

[Full Details HERE](#)



Regional Housing Initiatives Program

The Office for Regional Housing has launched a new \$10m Regional Housing Initiatives Program, which aims to identify regional housing projects that can bring strategic value to the state but may require targeted assistance and partnership with government to be delivered.

The Office is looking for opportunities to partner with entities such as local governments, regional employers, the development community and other stakeholder groups, for housing projects that:

- make a positive impact on the local community's economy or provide strategic benefits by securing core services
- demonstrate support for South Australian industry including the use of local products, trades and services
- are supported by partnerships and collaborations with other organisations such as government, industry and community; and
- are able to be delivered in a timely manner, are financially viable and will contribute to the long-term housing needs of the community.

More information and register your interest at: <https://www.rdaep.org.au/regio...>



Applications close 30 April 2024, or when funds are exhausted.

On-farm Emergency Water Infrastructure Rebate Scheme

The Government of South Australia and the Australian Government offers SA primary producers a rebate of up to 25% (maximum \$25,000) for the costs associated with new on-farm water infrastructure or for repairing or



Closes May 6 2024

Regional Event Fund

Attention event organisers! The Regional Event Fund, managed by the South Australian Tourism Commission, is now open for applications. Offering up to \$50,000 for established events and \$20,000 for new ones, this fund supports the growth of regional events, aiming to boost visitor numbers and the local economy. Apply now to bring your event to life

replacing damaged infrastructure.
Designed to support animal welfare
during droughts, increase drought
resilience, and aid in recovery from
natural disasters.

[Apply Now](#)

between September 2024 and August
2025.

[Apply HERE](#)

RDAEP Grant Finder

HANDY RESOURCES

[Training Providers](#) on Eyre Peninsula

[Primary Industries and Regions SA latest news](#)

[business.gov.au](#) - resources to help you learn about your industry's legal, operational
and business requirements

[Eyre Peninsula](#)

[Eyre Peninsula tourism development](#)

Regional Development Australia Eyre Peninsula

5 Adelaide Place,
Port Lincoln SA 5606
08 8682 6588
reception@rdaep.org.au
rdaep.org.au

RDAEP acknowledges the support of our key
stakeholders: Australian Government, South
Australian Government and Eyre Peninsula
councils.

[Unsubscribe](#)

